



driveHG.ca

Sailing Instructions

1. Rules

- 1.1 The regatta will be governed by the rules as defined in the *Racing Rules of Sailing (RRS)*.
- 1.2 The SAIL CANADA prescriptions shall apply, are amended and appear in Attachment 4.
- 1.3 The Regatta Regulations of the International J/24 Class Association (IJCA) will apply.
- 1.4 RRS 41 and 44.3(a), will be changed as follows:
 - (a) RRS 41 will be changed as follows: From the time a boat leaves her mooring for the first race of each day until she returns to her mooring and while not racing, she shall not receive outside help except as permitted by RRS 41 from any outside source except other competitors and official boats under the direction of the organizing authority. While racing, RRS 41 applies without modification. If RC displays Race Signal AP over H, these additions to RRS 41 are suspended until a boat leaves her mooring again. This also changes the preamble to Part 4 of the RRS.
 - (b) RRS 44.3(a) is changed so that the flag used by a boat taking a scoring penalty may be either a yellow flag or Code Flag "I" and shall have a hoist of not less than 150mm and a fly of not less than 200mm.
- 1.5 Bow numbers will be assigned to each boat and will be used as identification for the boat during the regatta. Bow numbers shall be applied in accordance with the instructions supplied and shall remain affixed until after a boat hauls out at the end of the regatta.
- 1.6 In accordance with RRS G3, a boat chartered or loaned for this event may carry national letters or a sail number in contravention of the class rules.
- 1.7 If there is a conflict between languages, the English text will take precedence.
- 1.8 Part 5, Section B of the RRS and RRS 41 are changed to permit Protest Arbitration.
- 1.9 RRS 61.1(a) is changed so that the red flag displayed by a protesting boat shall have a hoist of not less than 150mm and a fly of not less than 200mm.
- 1.10 If there is a conflict between the Notice of Race (NOR) and these Sailing Instructions (SIs), the SIs will take precedence. This changes RRS 63.7.

1.11 Class rule C 2.1 is changed to Class rule J.4.2 so that a crew nominated or listed for this event shall remain the same throughout the event. Emergency changes may be made only with written permission of the race committee.

1.12 Class rule C.10.2 is changed to Class Rule J.2 to allow a boat to carry a spare class spinnaker on board while racing for a specific event.

2. Notices to Competitors:

2.1 Notices to competitors will be posted on the official notice board(s) located outside the Lakeshore Room of PCYC.

2.2 Any questions regarding these Sailing Instructions shall be submitted in writing to the Race Committee PRO. The questions and any answers will be posted on the official notice board as soon as possible.

3. Changes to Sailing Instructions:

3.1 Any change to the Sailing Instructions will be posted before 0900 on the day it will take effect, except that any change to the schedule of races will be posted by 2000 on the day before it will take effect.

4. Signals Made Ashore:

4.1 Signals made ashore will be made at the flag pole on the southeast lawn of PCYC.

4.2 When flag AP is displayed ashore, '1 minute' is replaced with 'not less than 45 minutes' in the race signal AP.

4.3 When flag Y is displayed ashore, RRS 40 applies at all times while afloat. This changes the preamble to Part 4.

5. Schedule of Races:

5.1

Day	Date	Time	Event/Activity
Wednesday	07 September	0900 - 1800	Registration/Measurement/Crew Weigh-in
Thursday	08 September	0800 - 1600	Registration/Measurement/Crew Weigh-in
		0830 - 1600	Boat launching
		0800 - 1600	Get packet/finalize registration
		1130	Skipper's Meeting
		1300	First Warning signal for Practice Race
		1800	Opening Ceremony and BBQ
Friday	09 September	1100	First Warning Signal
		After Racing	Social Event
Saturday	10 September	1100	Warning for First Race of the Day
		1800	Social Event
Sunday	11 September	1100	First Warning Signal (No start after 1530)
		1600	Social Event

Weigh-in on race days will be required for authorized crew substitutions.

5.2 Ten races are scheduled over three consecutive days.

5.3 Four races are scheduled per day except that two races will be scheduled on Sunday. One extra race per day may be sailed provided that the regatta does not become more than one race ahead of schedule and the change is made according to the provisions of the Sailing Instructions. If the regatta is behind schedule, extra races to a maximum of five races may be sailed in a single day.

6. Class Flag:

6.1 The J/24 Class Flag (Blue insignia on a white background) shall be used in accordance with RRS 26.

7. Racing Areas:

7.1 Attachment 1 shows the location of the racing areas.

8. Courses:

- 8.1 Courses will be windward/leeward with 5 legs (course 5) or four legs (course 4).
- 8.2 The diagrams in Attachment 2 show the courses.
- 8.3 No later than the warning signal, the race committee signal boat will display the course designator, the approximate compass bearing and the distance of the first leg. The RC will also broadcast this information. Failure to broadcast or to receive this information shall not constitute grounds for granting redress. This changes RRS 62.1(a).
- 8.4 An offset mark (designated mark 1a) will be used in conjunction with mark 1. The offset mark will be placed to the left of mark 1 (looking up wind) at approximately a right angle to the weather leg and approximately 10 – 15 boat lengths to port of mark 1.
- 8.5 Mark 2 will be a gate consisting of two marks (mark 2P and mark 2S). If the gate is not present, mark 2 shall be rounded to port. Except when there is a change of course, the gate will be positioned approximately to windward of the RC signal boat at a distance to the discretion of the RC. The gate may be laid after the starting signal.
- 8.6 Except for a change of course, the finish for course 5 will be to windward of mark 1.
- 8.7 No 5-leg course will be shortened to less than four legs in length, and no 4-leg course will be shortened to less than three legs in length. For purpose of this SI only, the distance between mark 1 and the offset mark will not be regarded as a leg of the course. This changes RRS 33.

9. Marks:

- 9.1 Mark 1 will be an orange inflatable mark, mark 1a will be a red inflatable mark, marks 2P and 2S will be orange inflatable marks.
- 9.2 The following marks are rounding marks: 1, 1a, 2P, 2S
- 9.3 New marks, when used in accordance with SI 12.1 will be yellow inflatable marks.
- 9.4 The starting marks will be race committee boats at each end of the starting line. In the event that the port-end line race committee boat is not in place, it will be replaced with a spare mark with orange flag. An inflatable mark at the stern of the starting vessel is part of the starting vessel.
- 9.5 The finishing marks will be race committee boats at each end of the finish line. In the event that the port-end line race committee boat is not in place, it will be replaced with a spare mark with orange flag.

10. Areas That Are Obstructions:

- 10.1 No areas are designated as obstructions.

11. Start:

- 11.1 Races will be started using RRS26 with the warning signal made 5 minutes before the starting signal.
- 11.2 The starting line will be between staffs displaying orange flags on the starting marks.
- 11.3 A boat starting later than 10 minutes after her starting signal will be scored Did Not Start without a hearing. This changes RRS A4 and A5.
- 11.4 Race Committee may broadcast starting information, countdowns and the bow numbers of any boats OCS on the VHF channel designated in the Radio Communication portion of these SIs. Failure to make or receive such broadcasts or the order of transmission shall not be grounds for redress. This changes RRS 62.1(a).

12. Change of the Next Leg of the Course:

- 12.1 To change the next leg of the course, the race committee will lay a new mark (or move the finishing line) and remove the original mark as soon as practicable. When in a subsequent change a new mark is replaced, it will be replaced by an original mark.
- 12.2 Except at a gate, boats shall pass between the race committee boat signaling the change of the next leg and the nearby mark, leaving the mark to port and the race committee boat to starboard. This changes RRS 28.

13. The Finish:

- 13.1 The finishing line will be between a staff displaying an orange flag on the finishing line boat and a staff displaying an orange flag on a nearby RC boat or an inflatable mark.
- 13.2 If the RC intends to start another race, it will display code flag Second Substitute (with no sound) while the boats are finishing. This changes RRS race signals.

14. Penalty System:

14.1 RRS 44.1 (main body) and 44.2 (turns penalties) are not in use for this regatta. RRS 44.1(a) and 44.1(b) continue to apply. The Scoring Penalty, RRS 44.3, will apply, with penalties as modified by the IJCA (table below).

Action\Penalty	10%	20%	25%	30%
Touching a mark	X			
Breach of a part 2 rule ("right of way, room")	X			
Breach of a part 2 rule ("right of way, room") within the zone		X		
After Race Scoring Penalty for touching a mark		X		
After Race Scoring Penalty for a breach of a part 2 rule ("right of way, room")		X		
After Race Scoring Penalty for a breach of a part 2 rule ("right of way, room") within the zone			X	
If one of the above After Race Scoring penalties is taken after the protest time limit				X
If taken as the result of an arbitration				X
Penalties imposed by the Race Committee or Int. Jury without a hearing: These modify RRS 63.1				
If a boat fails to check in before racing (SI 18.1) (RC)	X			
If some, but not all requirements of a properly taken Scoring Penalty are met (Jury)				X
Penalty for a breach of RRS 42 (Jury)	X			

14.2 RRS 44.3(c) is modified as follows: The race score for a boat that takes a Scoring Penalty shall be the score she would have received without that penalty, made worse by the penalty number. The penalty number shall be calculated by applying the scoring penalty percentage, shown in the table above, that best suits her situation against the number of boats competing and rounding to the nearest whole number (rounding 0.5 upward). However she shall not be scored worse than Did Not Finish. The scores of other boats shall not be changed by application of these penalties; therefore, two boats may receive the same score.

14.3 The reporting requirements of RRS 44.3(b) may be satisfied by contacting the Race Committee by VHF radio channel to be identified in SI 27, **Radio Communication**. Additionally, a boat accepting a Scoring Penalty shall file a "Scoring Penalty Acceptance Form". The Race Committee will post a list of boats that have properly accepted a Scoring Penalty on the Official Notice Board.

- 14.4 After Race Scoring Penalties may be taken by filing a “Scoring Penalty Acceptance Form”, available from the Race Office, prior to the start of a hearing involving the incident. Timing of the filing, either within or after the protest time limit, will affect the penalty as shown in the table.
- 14.5 Arbitration may be used prior to the protest hearing for incidents involving the rules of Part 2 or RRS 31. Penalties accepted in arbitration shall be as shown in the table.
- 14.6 RRS Appendix P is in effect, except that P2 is modified such that P2.1 is the only penalty that shall apply. The percentage penalty of P2.1 is modified as shown in the table.
- 14.7 Other penalties as per RRS 64.1 apply for breaking some IJCA rules. See Attachment 3.

15. Time Limits and Target Times:

- 15.1 The target time for races is 60 minutes. Failure to meet the target time will not be grounds for redress. This changes RRS 62.1(a).
- 15.2 Boats failing to finish within 20 minutes after the first boat sails the course and finishes will be scored TLE (Time Limit Expired) without a hearing. A TLE score shall be two more points than the number of boats that have finished within the time limit. This changes RRS 35, 63.1, A4, A5 and A11. The RC will lower the blue “on station for finish” flag with a long sound when the finishing window is closed.

16. Protests and Requests for Redress:

- 16.1 Protest forms are available at the race office. Protests and requests for redress or reopening shall be delivered there within the appropriate time limit.
- 16.2 The protest time limit is 90 minutes after the last boat has finished the last race of the day or from the time the race committee signals no more racing for the day, whichever is later.
- 16.3 The race committee will post a list of penalties being assigned by the race committee or jury (including RRS 42 violations under Appendix P) prior to the end of the protest time limit. The deadline for requests for redress based on these assigned penalties will be either 30 minutes after posting or the protest time limit, whichever is later.
- 16.4 Notices will be posted no later than 30 minutes after the protest time limit to inform competitors of hearings in which they are parties or named as witnesses. Hearings will be held in the protest room, located at the room next to the race office.
- 16.5 Breaches of instructions 18, 21, 23, 24, 25, 26, and 27 will not be grounds for a protest by a boat. This changes rule 60.1(a). Penalties for these breaches may be less than disqualification if the jury so decides.
- 16.6 On the last scheduled day of racing, a request for reopening a hearing shall be delivered:
 - (a) within the protest time limit if the requesting party was informed of the decision on the previous day or before;
 - (b) no later than 30 minutes after the requesting party was informed of the decision on that day. This changes RRS 66.

- 16.7 On the last scheduled day of racing, a request for redress based on a protest committee decision shall be delivered no later than 30 minutes after the decision was posted. This changes RRS 62.2.
- 16.8 Decisions of the jury will be final as provided in RRS 70.5.
- 17. Scoring:**
- 17.1 Three races are required to be completed to constitute a championship.
- 17.2 When fewer than five races have been completed, a boat's series score will be the total of her race scores. When five or more races have been completed, a boat's series score will be the total of her race scores, excluding her worst score. This modifies Appendix A.
- 18. Safety Regulations:**
- 18.1 Before the warning signal of the first race each day, each boat shall sail on starboard tack past the stern of the race committee boat and hail her bow number and receive an acknowledgement from the race committee.
- 18.2 A boat that retires from a race or does not intend to compete in a race or returns to the racing area shall notify the race committee as soon as possible.
- 19. Replacement of Crew or Equipment:**
- 19.1 There shall be no crew replacement except as allowed by class rule J.4.2, as noted in SI 1.11.
- 19.2 The number of crew shall not change during the regatta.
- 19.3 Substitution of damaged or lost equipment will not be allowed unless authorized by the race committee. Requests for substitution shall be made to the race committee at the first reasonable opportunity. Substitution of spinnaker poles or rudders with spares that have been measured for this event and are carried aboard may be done without notification. Spare spinnaker may be used subject to class rule J.2 as noted in SI 1.12.
- 20. Equipment and Measurement Checks:**
- 20.1 A boat or equipment may be inspected at any time for compliance with the class rules and the sailing instructions. On the water, a boat may be instructed by a race committee equipment inspector or measurer to proceed immediately to a designated area for inspection.
- 21. Event Advertising and Bow Numbers:**
- 21.1 Boats shall display bow numbers that are supplied by the organizing authority. Such bow numbers shall be installed according to the instructions supplied with them and shall remain in place for the duration of the regatta.
- 21.2 Boats shall display event advertising that is supplied by the organizing authority. Such advertising shall be installed according to the instructions supplied with them and shall remain in place for the duration of the regatta.

22. Official Boats:

22.1 Official Boats shall be marked as follows: Race committee (RC flag), Jury (Jury flag), Press (Press flag)

23. Support Boats:

23.1 Support boats shall comply with 1.4.

23.2 Support boats shall register during scheduled registration, declaring to which boat or boats they are attached.

23.3 Support boats shall remain no less than 150m from the race course from the Preparatory signal until all boats have finished or retired or the race committee has signaled a postponement, general recall or abandonment.

23.4 Failure of a support boat to comply with any of these SI 23 rules may be considered a breach of RRS 2, Fair Sailing, by the boats associated with the support boat and is subject to protest. Any penalty applied to the boats associated with the support boat shall be at the discretion of the jury and may not be excluded from their score. This modifies RRS 64.1(c) and A2.

23.5 Support boat drivers shall have valid third-party liability insurance in the same amount as is required of each participating boat and provide proof of that insurance at registration.

24. Trash Handling:

24.1 Competitors shall not dispose of trash in the water. Trash shall be held for proper disposal ashore or may be placed on official boats if such facilities are available.

25. Afloat and Haul-out Restrictions:

25.1 Boats shall be afloat by Thursday, September 9 – 1800 and shall not be hauled out during the regatta except with, and according to the terms of prior written permission of the jury. This includes rudders.

26. Diving Equipment, Plastic Pools and Other Prohibited Actions:

26.1 Underwater breathing apparatus and plastic pools or their equivalent shall not be used between the time the boat is afloat and the end of the regatta. The hull may be cleaned at any time by swimming or keelhauling using ropes, cloth or other equipment designed for that use.

26.2 Careening by any means for the purpose of cleaning or inspecting the hull is prohibited during the regatta.

27. Radio Communications:

- 27.1 Except in an emergency, a boat shall neither make radio transmissions while racing nor receive radio communications not available to all boats. This restriction also applies to mobile devices.
- 27.2 The race committee may choose to make VHF radio communications to the fleet on channel 72. It is strongly encouraged that each boat has a VHF radio on board capable of receiving these communications.

28. Prizes:

- 28.1 Prizes will be awarded to the top five boats.
- 28.2 There will be assorted daily awards.
- 28.3 There will be a prize for the top master skipper (age 55+ at date of the event), Junior skipper (age 21 or less at the date of the event) and woman skipper.
- 28.4 The top-finishing, not previously qualified primary helmsperson who is a current member of any NJCA as recognized by the International J/24 Class and meets all other eligibility requirements will earn a berth to the 2017 J/24 World Championship. This berth is allocated by the International J/24 Class and is available to sailors from any country.

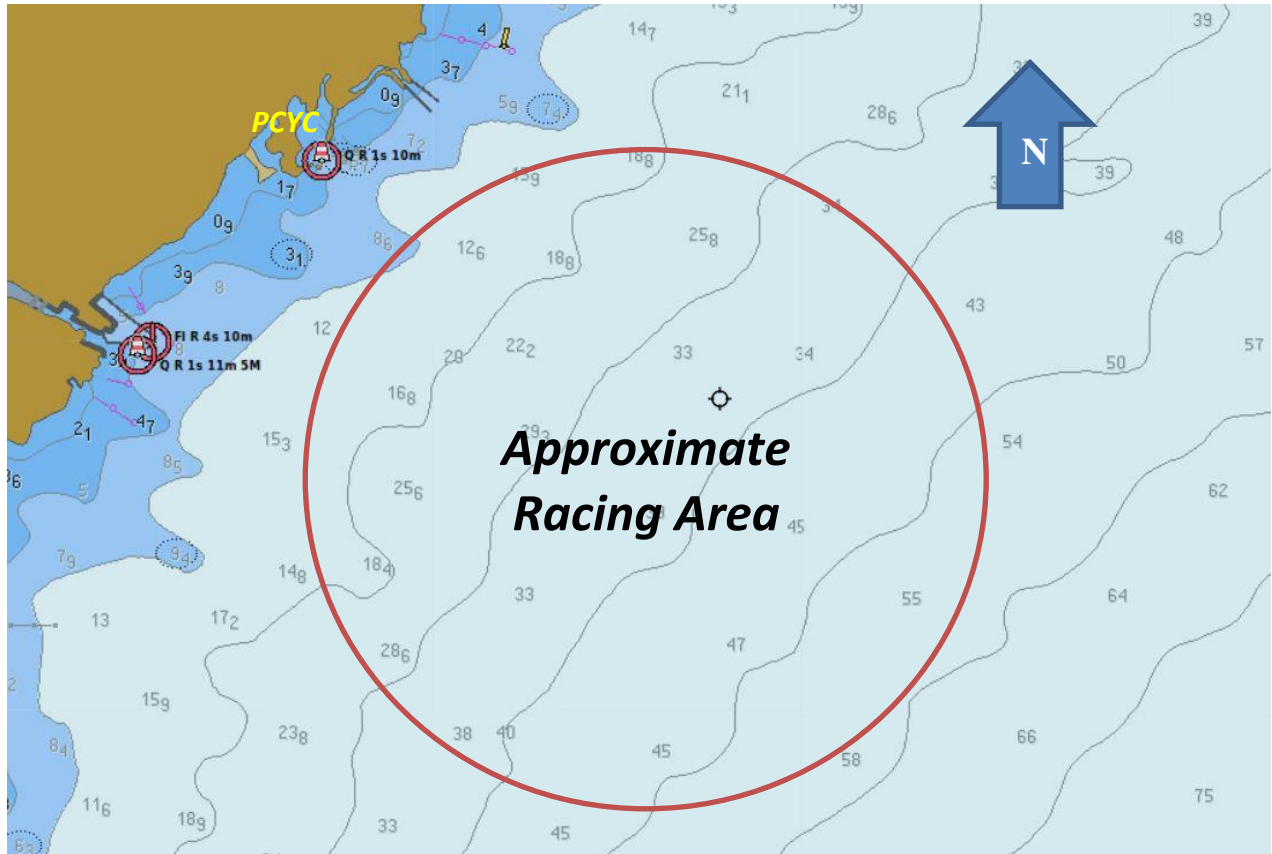
29. Disclaimer of Liability:

- 29.1 Competitors participate in the regatta entirely at their own risk. See RRS 4, Decision to Race. The organizing authority will not accept any liability for material damage or personal injury or death sustained in conjunction with or prior to, during or after the regatta.
- 29.2 All competitors will be required to sign a Competitor Liability Waiver form to be provided in the registration package.

30. Insurance:

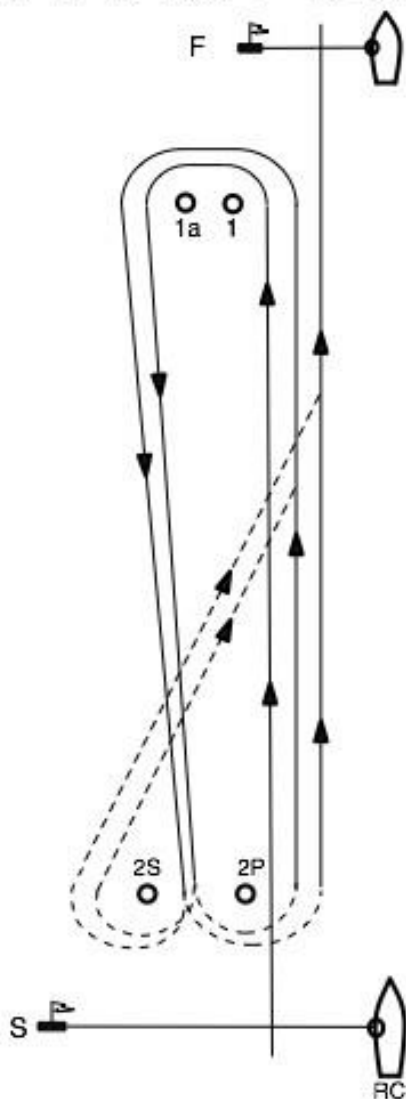
- 30.1 Proof of current marine liability insurance with a minimum value of \$1,000,000 (CAN) per occurrence; or \$300,000 (US) per occurrence.

ATTACHMENT 1 - RACING AREA LOCATION

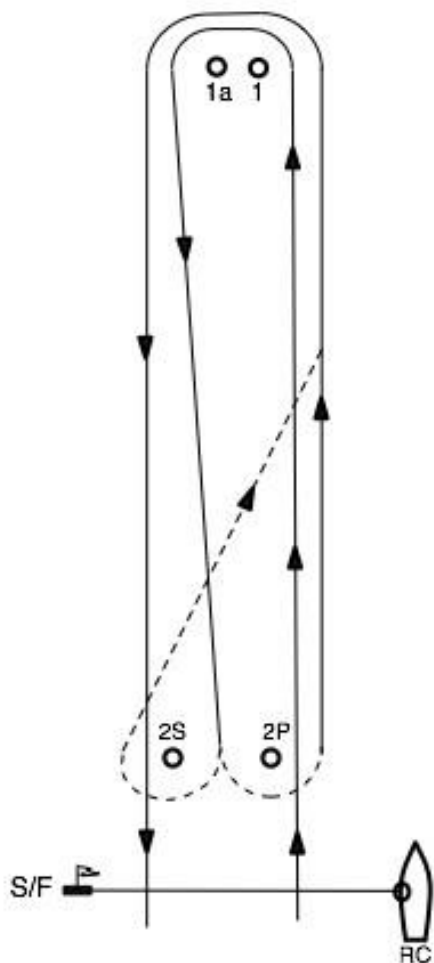


ATTACHMENT 2 – COURSE DIAGRAMS

COURSE 5
START - 1 - 1a - 2S/2P - 1 - 1a - 2S/2P - FINISH



COURSE 4
START - 1 - 1a - 2S/2P - 1 - 1a - FINISH



NOTE: If the gate (mark 2p and mark 2s) is not present, mark 2 will be set in place of marks 2p and 2s, and shall be rounded to port. 2S/2P in the rounding sequence for the courses is replaced by 2.

ATTACHMENT 3 -

Alternative Penalties for Breaking Some Class Rules

The following penalties for a boat that breaks these listed class rules would be in place of disqualification. All of these scoring penalties shall be calculated according to RRS 44.3(c).

Class Rule	Infringement	Scoring Penalty
B.3	Complete Measurement Certificate, including the Inventory of Required and Optional Equipment is not on board	20%
C.4	Advertising does not conform to World Sailing (Reg 20) standards	20%
C.9.4 & C.9.5	Mainsail is set outside of the limit marks	20%
C.5.1(a)(1)	Bailing bucket (9 liter min. with lanyard) is not on board	20%
C.7.2(a)(9)	Approved compass device is not present or not functional	20%
C.5.1(a)(4)	Throwable lifesaving device with attached sea anchor is not on deck, ready for use	20%
C.5.1(a)(5)	First aid kit is not on board	20%
C.5.1(b)(1) C.5.1(a)(2) C.5.2(a)(10)	Any of anchors(s), outboard motor/engine, battery or engine fuel container(s) are not in their proper location and secured against movement	20%
C.7.3(a)(11)	Elastic (shock) cord is used in the standing or running rigging where it is not specifically allowed	20%
C.5.3	Stowage of equipment other than unbagged sails on the cabin sole	20%
	Removal of the rudder from the water when the Sailing Instructions stipulate that the boat shall remain afloat for the duration of the regatta	20%

If a boat receives one of the above penalties, the protest decision shall include whether the same penalty will be applied to other races in which the same infringement likely occurred.

Attachment 4

Sail Canada Prescriptions 2013–2016 Effective 1 January 2013

Sail Canada prescribes:

Rule 46 – Person in Charge

Sail Canada prescribes that the designated person in charge, if resident in Canada, shall be a member of a club affiliated with Sail Canada.

Rule 61.2 – Protest Contents

Sail Canada prescribes that no fee shall be charged for delivering a protest or a request for redress.

Rule 64.3 – Decisions on Protests Concerning Class Rules (insert directly under the title to the rule)

Sail Canada prescribes that unless otherwise provided in its class rules, the ISAF Equipment Rules of Sailing shall apply to all classes racing in Canada.

Rule 67 – Damages

Sail Canada prescribes that a boat that has been found by a protest committee to have broken a rule and caused damage shall be considered at fault for the purposes of rule 67.

Rule 70.5(a) – Appeals and Requests to a National Authority

Sail Canada so prescribes.

Rule 88.2 National Prescriptions

Sail Canada prescribes that the sailing instructions of national or lesser events shall not change or delete any Sail Canada prescription. For events that have a no appeal protest committee or an international jury, prescriptions to rule 61.2 and 67 shall not be deleted.

Appendix E8 – Appendix G Changes to Identification on Sails (insert directly under title to the rule)

Sail Canada prescribes that this rule applies to Canadian boats in all classes.

Appendix R – Procedures for Appeals and Requests (insert after the preamble)

Sail Canada prescribes that it may delegate an appeal or request for confirmation or correction to an association appeals committee, such as a provincial association appeals committee or a racing association appeals committee. Decisions of an association appeals committee may be further appealed to Sail Canada.

1. Appendix R2.1(a) – Submission of Documents

Sail Canada prescribes that no later than 15 days after receiving the association appeals committee's written decision, the appellant may send a further appeal and a copy of the association appeals committee's decision to Sail Canada. The appeal shall state why the appellant believes the association appeals committee's decision or its procedures were incorrect.

Appendix R2.2 – Submission of Documents

Sail Canada prescribes that in the case of a further appeal to Sail Canada, this rule shall apply to the appellant as though it was an initial appeal, and to the appealed committee as though it was the protest committee.

Appendix R3 – Responsibilities of National Authority and Protest Committee

Sail Canada prescribes that when an appeal is delegated to an association appeals committee, the responsibilities and actions required of the national authority in this rule, and in rules R4, R5, 71.2 and 71.3, shall be performed by the association appeals committee.

When a decision of an association appeals committee is further appealed, Sail Canada shall send to the parties, protest committee and association appeals committee copies of the appeal. No member of the association appeals committee shall take any part in the discussion or decision on the appeal.

2. Appendix R4 – Comments and Clarifications

Sail Canada prescribes that when a decision of an association appeals committee is further appealed, the parties, protest committee and association appeals committee may make comments on the appeal. Comments on the appeal shall be made no later than 15 days after receiving it from Sail Canada. Sail Canada shall send copies of the comments to the parties, protest committee and association appeals committee as appropriate.